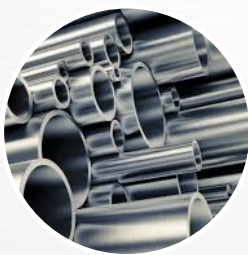


# HPPT PRODUCT BROCHURE

Your global sourcing specialists



VALVES | PIPES | PIPE FITTINGS | FLANGES | FASTENERS | GASKETS | INSTRUMENTATIONS  
INDUSTRIAL FILTERS & STRAINERS | NON-METALLIC PRODUCTS | LONG & FLAT PRODUCTS

# ABOUT HPPT

HPPT - High-Performance Products Trading DMCC is a renowned mechanical, piping, electrical and instrumentation products and complete package supplier and solutions provider that caters to various markets and customers worldwide. The establishment of the HPPT in 2013 marked the beginning of unprecedented success in various fields and industries such as **Oil & Gas, Paper & Food Industry, Nuclear Power Plants, Renewable Energy Power Plants, Waterworks, Water Treatment Plants, Combined-cycle Plants, Material Handling, Gas Processing Plants, Chemicals, HVAC, and Shipbuilding.**

## CLIENT BENEFITS



WORLD-CLASS  
QUALITY



GLOBAL SUPPLY  
CHAIN



SHORT CYCLE  
TIMES



LEAN PROJECT  
MANAGEMENT



ON-TIME  
DELIVERY



COST-EFFECTIVE



ONE-STOP  
SOLUTION

### One-stop Source and Solutions Provider for your Mechanical and Piping requirements

Our customers rely on our ability to provide a **complete mechanical and piping package from a single source**. We understand that each project is unique and requires a **customized solution**. Thus, our experienced team of specialists guarantees a smooth product supply from planning, execution to project completion through our personalized approach in every material, design, and technical engineering consultations. We conduct stringent quality control to ensure that our products **conform to international standards** and meet customer requirements.

### Benefit from our powerful partnerships, worldwide.

Our sourcing expertise with a wide range of manufacturers globally has placed us to be the **customer's choice** in providing products and solutions that are *uncommon, obscure and difficult to find* by the customers.



### Supply Chain and Procurement Support

We have the procurement expertise that spans consulting, technology and managed services. HPPT procurement solutions for the oil & gas and industrial sectors encompass **spend analysis, category management, strategic sourcing, supply market intelligence, supply risk management**, and more. We offer complete procurement and supply chain module to our customer to minimize project procurement cost meeting delivery schedule.



## VALVES



### MANUFACTURING:

- Cast
- Forged

### TYPES:

- |       |           |
|-------|-----------|
| Gate  | Butterfly |
| Globe | Diaphragm |
| Check | Knife     |
| Ball  | Pinch     |
| Plug  | Safety    |
|       | Control   |

## PIPES



### MANUFACTURING:

#### SEAMLESS

- Cold Finished
- Hot Finished
- Bimetallic

#### WELDED

- Longitudinal
- Spiral
- Calibrated

### TYPES:

- Round
- Square
- Rectangular
- Special Shapes
- Flexible

## PIPE FITTINGS



### MANUFACTURING:

#### SEAMLESS

- Cold Formed
- Hot Formed

#### BW

#### FORGED CAST

#### WELDED

- From Pipe
- From Plate

### TYPES:

- |          |                 |
|----------|-----------------|
| Elbows   | Couplings       |
| Tees     | Olets           |
| Reducers | Special Bends   |
| Caps     | Branch Fittings |
| Nipples  |                 |

## FLANGES



### MANUFACTURING:

- Forged
- Cast

### TYPES:

- |              |                |
|--------------|----------------|
| Welding-neck | Socket-weld    |
| Lap-joint    | Blank          |
| Blind        | Orifice        |
| Slip-on      | Anchor         |
| Threaded     | Spectacle Bind |

## FASTENERS



### MATERIALS:

- Carbon Steel
- Mild Steel
- Alloy Steel
- Stainless Steel

### THREADS:

- Metric
- Whitworth
- BS /UNF
- SAE/ DIN

### TYPES:

- Stud Bolts
- Anchor Bolt Grade
- U-bolts
- Hex & Heavy Hex Bolts
- Nuts
- Washer
- Screws

### Coatings:

Zinc Plated/Hot Dip Galvanized/Stainless Steel/Black/PTFE/Yellow/Brass/Dracomet, etc.

## GASKETS



### MANUFACTURING:

#### TYPES:

- Standard Gaskets
- Insulating Joints

## INDUSTRIAL FILTERS AND STRAINERS



### MANUAL:

- "Y" Strainer
- "T" Strainer
- Temporary Strainer
- Straight/Angular Filter
- Centrifugal Separator
- Simplex and Duplex
- Basket

### SELF-CLEANING:

- Bernoulli
- Backflushing
- Blade-type
- Backwashing
- Disc Filter

## PROCESS CONTROL & AUTOMATION



- Field & Panel Instruments
- Instrumentation Tubes & Fittings
- Instrumentation Valves & Manifolds

- Tank Gauging System
- Field Bus Solution
- Process Analyzer
- Safety Interlocks
- Actuators

## NON-METALLIC PRODUCTS



### MATERIALS:

- Pipe
- Pipe Fittings
- Flanges
- Valves
- Tanks
- Special Fittings
- Bolts

### TYPES OF PIPES:

- Rigid
- Corrugated
- Flexible

### MANUFACTURING:

- Extruded
- Wound

## LONG & FLAT PRODUCTS



### MANUFACTURING:

- Cold Finished
- Hot Finished

### TYPES:

- |       |            |
|-------|------------|
| Plate | Flat Bar   |
| Coil  | Structural |
| Bar   | Profiles   |
| Angle |            |



## DIN/EN CASTED VALVES



- **Type:** Gate, Globe, Check, Butterfly, Ball, Bellow, Self-regulated valves, (+).
- **Sizes:** From DN15 to DN1200.
- **Pressure:** From PN10 to PN64.
- **Ends:** Flanged, welded, threaded, wafer, lug, etc.
- **Materials:** Cast iron, stainless steel, brass, (+).
- **Optional:** Soft sealing valves (EPDM, NBR, etc.).
- **Applications:** Water treatment and filtration, power generation, industry, marine, energy, etc.

## ANSI CASTED VALVES



- **Type:** Gate, Globe, Check, Butterfly, Ball, Bellow (+).
- **Sizes:** From ½" to 72".
- **Class:** From 150# to 2.500#.
- **Ends:** Flanged, welded and threaded.
- **Materials:** Carbon steel, stainless steel, alloy steel, (+).
- **Applications:** Chemical, petro-chemical, refining, oil & gas, water, power generation, marine, etc.

## FORGED VALVES



- **Type:** Gate, Globe and Check, Bellow.
- **Sizes:** From ¼" to 8".
- **Class:** From 800# to 4.500#.
- **Construction:** ASME B16.34, BS 5352, API 602.
- **Ends:** Flanged, socket weld, butt weld, threaded.
- **Materials:** Carbon steel, stainless steel, alloy steel, (+).
- **Special options:** Fully welded, extended body, extended bonnet, (+).
- **Applications:** Petroleum refining and production, offshore, oil & gas, power industry, fertilizer, chemical and desalination, etc.

## BUTTERFLY VALVES



- **Types:** Centred and single offset.
- **Sizes:** From 1 ¼" to 138".  
from DN32 to DN3000.
- **Class:** From 150# to 300#.  
from PN6 to PN100.
- **Ends:** Wafer, lug, flanged.
- **Materials:** Carbon steel, stainless steel and other alloys, (+).

## HIGH-PERFORMANCE BUTTERFLY VALVES



- **Types:** Double and triple eccentricity.
- **Sizes:** From 2" to 160".  
from DN50 to DN2000.
- **Class:** From 150# to 2.500#.  
from PN10 to PN200.
- **Construction:** Metal to metal closure, zero leakage, fire safe.
- **Ends:** Wafer, lug, flanged and welded, (+).
- **Materials:** Carbon steel, stainless steel, alloy steel, duplex, inconel, hastelloy, etc.

## TRUNNION MOUNTED BALL VALVES



- **Type:** Side-entry and Top entry.
- **Sizes:** From 1" to 60". From DN50 to DN200.
- **Class:** From 150# to 2.500#. From PN6 to PN400.
- **Construction:** ASME B16.34, API 6D, ISO 17292; soft and metal to metal seats; casted and forged body.
- **Ends:** Flanged, welded, (+).
- **Materials:** Carbon steel, stainless steel, alloy steel, bronze, duplex, super duplex, etc.

## FLOATING BALL VALVES



- **Sizes:** From ½" to 8". From DN15 to DN300.
- **Class:** From 150# to 600#. From PN16 to PN40.
- **Construction:** ASME B16.34, API 6D, API 608, BS 5351; soft and metal-to-metal seats; forged and casted body.
- **Ends:** Flanged, welded and threaded.
- **Materials:** Carbon steel, stainless steel, alloy steel, bronze, brass, duplex, superduplex, etc.

## KNIFE GATE VALVES



- **Sizes:** From 2" to 36" from DN50 DN1200.
- **Pressure:** From 150# to 900# from PN6 to PN100
- **Closure:** Soft and metal to metal.
- **Ends:** EN 1092, ANSI B16.5, (+).
- **Materials:** Cast iron, carbon steel, stainless steel, (+).
- **Applications:** Water treatment services, mining, solid particles services, paper industry and other industrial processes.

## DUAL PLATE CHECK VALVES



- **Sizes:** From 2" to 80". From DN40 to DN1200.
- **Class:** From 150# to 2.500#. From PN10 to PN250.
- **Construction:** Soft seat and metal to metal seat, casted and forged body.
- **Ends:** Wafer, lug, hub, flanged and welded.
- **Materials:** Carbon steel, stainless steel, cast iron, (+).

## NOZZLE CHECK VALVES



- **Sizes:** From 1" to 88". From DN25 to DN2200.
- **Class:** From 150# to 2.500#. From PN16 to PN400.
- **Ends:** Wafer, lug, hub, flanged, welded and threaded.
- **Construction:** Non-slam, soft & metal to metal seats, fire safe, forged & casted body.
- **Materials:** Carbon steel, stainless steel, cast iron, (+).

## SAFETY/ PRESSURE RELIEF VALVES



- **Sizes:** From ½" to 20". From DN15 to DN500.
- **Class:** From 150# to 2.500#. From PN16 to PN200.
- **Ends:** Flanged, welded, threaded.
- **Construction:** Forged and casted body.
- **Materials:** Carbon steel, stainless steel, cast iron, (+).
- **Applications:** Steam, gases, vapours and liquids. Cryogenic services.
- **Options:** Open bonnet, soft seat, bellow, lifting device, sealed packing lever, etc.



## PLUG VALVES



- **Type:** Lubricated and non-lubricated plug valves.
- **Sizes:** From ½" to 36". From DN15 to DN500.
- **Class:** From 150# to 2.500#. From PN16 to PN40.
- **Ends:** Flanged, welded and threaded.
- **Materials:** Carbon steel, stainless steel, alloy steel, cast iron and other alloys, duplex, superduplex, (+).

## DOUBLE BLOCK & BLEED (DBB) PLUG VALVES



- **Type:** Double expanding plug valve.
- **Sizes:** From 2" to 36".
- **Class:** From 150# to 600#.
- **Construction:** Full/reduced bore, fire safe. Allows in-line maintenance. Zero leakage.
- **Ends:** Flanged.
- **Materials:** Carbon steel and alloy steel, (+).
- This valve has emerged as the industry standard for movement and storage of petroleum products in refineries, tank farms and terminals.

## DIAPHRAGM VALVES



- **Size:** From ¼" to 12" . From DN 15 to DN 300.
- **Pressure:** max. permissible pressure 16 bar.
- **Temperature:** max. permissible temperature 160°C.
- **Ends:** Flanges, welded BW and SW, the screwed.
- **Materials:** Cast Iron and Ductile Iron, Stainless Steel, Bronze, (+).
- **Lining:** Ebonite, Butyl, PTFE/TFM, Polyamide, Halar (ECTFE)
- **Diaphragm:** EPDM, Nitrile, Butyl, TFM, CSM (Viton)
- **Applications:** Chemical Industry, mining, water treatments, Paper and cellulose industry, Sugar Industry, Acids and Alkaline Fluids, Chlorine Processes, etc.

## CONTROL VALVE



- **Type:** Globe control valve, (+).
- **Sizes:** From ½" to 42".  
from DN15 to DN400.
- **Class:** From 150# to 4.500#.  
from PN16 to PN200.
- **Construction:** Casted and forged body.
- **Materials:** Carbon steel, stainless steel, alloy steel, cast iron, duplex, special alloys, (+).

## ON-OFF VALVES



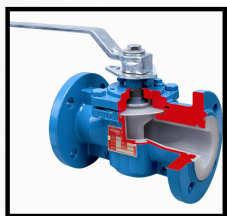
- **Type:** Ball, Gate, Globe, Butterfly, Plug, Knife
- **Sizes:** From ½" to 80". From DN15 to DN2000.
- **Class:** From 150# to 4.500#. From PN16 to PN200.
- **Construction:** Casted and forged body.
- **Actuators:** Multiturn & quarter turn electric actuators, pneumatic actuators (rack & pinion, scotch yoke), hydraulic actuators, gas over oil actuators.
- **Extras:** Additional equipment can be supplied as actuator passive fire protection, local control panel, air tank and so on.
- **Materials:** Carbon, stainless & alloy steel, cast iron, duplex, superduplex, exotic alloys, (+).

## BRONZE AND BRASS VALVES



- **Type:** Ball, Gate, Globe, Check, Butterfly, Plug, Needle, Filters
- **Sizes:** From ½" to 24". From DN8 to DN600.
- **Class:** From 150# to 300#. From PN10 to PN40.
- **Ends:** Flanged, threaded, wafer, lug, welded.
- **Applications:** Water distribution, cooling and heating, wastewater, sanitary, compressed air, etc.

## LINED VALVES



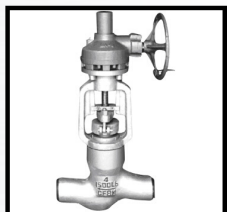
- **Types:** Ball, Plug, Check, Butterfly.
- **Sizes:** From ½" to 12". From DN10 to DN500.
- **Class:** From 150# to 300#. From PN16 to PN25.
- **Construction:** Internally lined valves with PFA, FEP, PP, PTFE, etc. Internal line can cover all wetted parts of the valve.
- **Advantages:** Lower operating torques, zero leakage, corrosion resistance, prevention of fluid contamination.
- **Applications:** Paper, cosmetics, pharmaceutical, chemical industries, etc.

## THERMOPLASTIC VALVES



- **Type:** Ball, Diaphragm, Butterfly, Check, Vent & Bleed, Pressure Regulation, Filters, Angle Valves
- **Sizes:** From DN10 to DN300.
- **Class:** From PN8 to PN16.
- **Ends:** Flanged, welded, threaded, lug, wafer.
- **Materials:** PVC, polypropylene, ABS, PVDF, etc.
- **Applications:** Water works and sea water, industry, chemical processes, mining, gas distribution, etc.

## PRESSURE SEAL VALVES



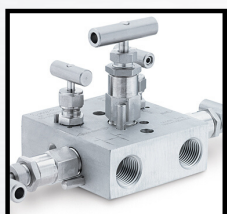
- **Type:** Gate, Globe and Check.
- **Sizes:** From 2" to 48".
- **Class:** From 900# to 2.500#.
- **Design:** ASME B16.34, EN 12516, etc.
- **Ends:** Flanged and butt weld.
- **Materials:** Carbon steel, stainless steel, alloy steel, duplex, super duplex, exotic alloys, (+).
- Recommended for high pressure applications.

## VALVES FOR HF ALKYLATION



- **Type:** Gate, Globe and Check.
- **Sizes:** From ½" to 36".
- **Class:** From 150# to 800#.
- **Construction:** API 600 and 602, fire safe design, low emissions according to API 622 and ISO 15848, acid detecting paint.
- **Materials:** Carbon steel and monel, forged and casted.

## INSTRUMENTATION VALVES & MANIFOLDS



- **Type:** Ball, Needle, Relief, Check, Plug, Manifolds, etc.
- **Sizes:** From 1/8" to 2".
- **Pressure:** From 1000 psi to 60.000 psi.
- **Ends:** Threaded, flanged, quick connections, welded.
- **Materials:** Stainless steel.

## CRYOGENIC VALVES



- **Type:** Ball, Gate, Globe, Check, Butterfly, Control, etc.
- **Size:** From 1" to 48". From DN15 to DN500.
- **Class:** From 150# to 900#. From PN16 to PN40.
- **Temperature:** From -196°C to +200°C
- **Ends:** Flanged, welded, (+).
- **Materials:** Stainless steel, (+).
- **Applications:** Very low temperature services, cryogenic, LNG, etc.



## SEAMLESS PIPES

Standards:	API Spec 5L, ASTM and other technical requirements by the end user.
Diameter:	21.3mm – 914mm (0.5"-36")
Wall Thickness:	2.77mm-120mm (0.109"-4.72")
Steel Grade:	API PSL1/PSL2: A, B, X42-X100 ASTM A53/A106: Grade A, B, C; A333:Grade1-Grade8; A335:P1-P92 EN 10210/10219/10216: S235-S460, P195GH-16Mo3 DIN1629/17175, JIS G3454/3455/3456
Length:	2m-24m
Sour Service:	NACE MR0175/ISO 15156

## WELDED PIPES (ERW / HFW PIPE)

Standards:	GB/T 9711, API Spec 5L, ISO 3183, GB/T 3091, EN10220, EN10217, DIN 1626, DINB2458, JIS G3445, JIS G3444, BS1387, AS/NZS 1163 and other technical requirement by end-user.
Diameter:	21.3mm-660mm (1/2"-26")
Wall Thickness:	0.6mm-19.9mm (0.024"-0.783")
Steel Grade:	API PSL1: A, B, X42-X70 API PSL2: BM, X42-X80M EN: S235-S450
Length:	SRL/DRL
Coating:	DIN 30670/30678, CSA Z245, AWWA C210

## SSAW / SAWH PIPE

Standards:	GB/T 9711, API Spec 5L, ISO 3183, GB/T 3091, EN10220, EN10217, DIN 1626, DINB2458, JIS G3445, JIS G3444, BS1387, AS/NZS 1163 and other technical requirement by end-user.
Diameter:	219mm-3505mm (8"-138")
Wall Thickness:	5mm-25.4mm (0.2"-1")
Steel Grade:	API PSL1: A, B, X42-X100, API PSL2: BM, X42M-X100M EN: S235-S450
Length:	6m-80m
Sour Service:	DIN 30670/30678, CSA Z245, AWWA C210

## LSAW / SAWL PIPE

Standards:	GB/T 9711, API Spec 5L, ISO 3183, GB/T 3091, EN1022, EN10217, DIN 1626, DINB2458, JIS G3445, JIS G3444, BS1387, AS/NZS 1163 and other technical requirement by end-user.
Diameter:	457mm – 3500mm (18"-138")
Wall Thickness:	6mm-120mm (0.236"-4.72")
Steel Grade:	API PSL1: A, B, X42-X100, API PSL2:BM, X42M-X100M, ASTM: A139, A252, A53, A572, A671, A672, A691, EN: S235-S450
Length:	2.5m-12.2m

## STAINLESS PIPE (SEAMLESS & WELDED)

Materials	Ferritic,(Super )Austenitic, (Super)Duplex, Corrosion & High Temperature Resistant Alloys, Clad, Titanium, Nuclear Grade
Diameter:	6mm-2200mm
Wall Thickness:	0.5mm-80mm
Service:	Sour Service, NACE MR0175/ISO15156, NACE MR0103
Delivery Condition:	Hot Piercing, Hot Extrusion, Cold Finished

## OIL COUNTRY TABULAR GOODS (OCTG)

### CASING

Standards:	API 5CT, API 5L, API 5B, API RP 5C5
Diameter:	114.3mm-508mm (4 1/2"-20")
Wall Thickness:	5.21mm-16.13mm (9.50ppf-133ppf)
Steel Grade:	H40, J55, K55, N80, L80, C90, C95, T95, C110, P110, Q125

### TUBING

Standards:	API 5CT, API 5B, API RP 5C5
Diameter:	48.26mm-114.3mm (1.9"- 4 1/2")
Wall Thickness:	3.18mm-16mm (2.4ppf-26.1ppf)
Steel Grade:	H40, J55, K55, R95, N80, L80, C90, C95, T95, P110, Q125

## DRILL PIPE, COLLAR, HW DRILL PIPE

Standards:	API 5DP, API 7-1, NS-1, DS-1
Diameter:	60.32mm-168.28mm (2 3/8"-6 5/8")
Wall Thickness:	7.11mm-27mm (6.65ppf-74.62ppf)
Steel Grade:	E, X, G, S



## SEAMLESS AND WELDED BW FITTINGS

TYPE	DIMENSION	MATERIALS	STANDARD
<ul style="list-style-type: none"> <li>Elbows 180°-90°-45°-30° – LR-SR</li> <li>Blends 3D-5D-10D &amp; various</li> <li>Tees</li> <li>Concentric &amp; Eccentric Reductions</li> <li>Caps</li> <li>Laterals Tees to 45°</li> <li>Crosses</li> <li>Stub Ends</li> </ul>	1/2" - 72"	<p><b>Carbon Steel &amp; LTCS</b> ASTM A 234 WPB/C MSS-SP75 - ASTM A 860 WPHY42-46- 52-56-60-65-70-80, ASTM A 420 WPL6 / ASTM A 420 WPL3</p> <p><b>Alloy Steel</b> ASTM A 234 WP1/WP12/WP11/WP22/ WP5/WP9/WP91</p> <p><b>Stainless Steel</b> ASTM A 403 WP304/L/H, ASTM A 403 WP321/H, ASTM A 403 WP347/H, ASTM A 403 WP316/L/H/Ti, Duplex, Superduplex, 6Mo &amp; 904L</p> <p><b>Titanium, Alloys and Copper Alloys</b> Nickel 200/201, Alloy 400-600-601-615-800H-800HT-825-B2-B3-C22-59-C276 Cu-Ni 90/10 &amp; 70/30, Titanium Gr. 2</p>	<p>ASME B16.9,</p> <p>ASME B16.28, ASME B31.1-31.3-31.4-31.8, MSS SP75, DIN, GOST - AFNOR - BS - EN</p>

## FORGED FITTINGS

TYPE	DIMENSION	MATERIALS	STANDARD
<ul style="list-style-type: none"> <li>Elbows 90°- 45°</li> <li>Tees</li> <li>Lateral tees to 45°</li> <li>Crosses</li> <li>Caps</li> <li>Male-Female</li> <li>Reducers</li> <li>Female-Male</li> <li>Reducers</li> <li>Hexagonal Nipples &amp; Reducing</li> <li>Unions</li> <li>Sleeves, whole, half &amp; reduced</li> <li>Welding Bosses</li> <li>O'lets</li> <li>Pipe Nipples</li> <li>Swage Nipples</li> </ul>	1/8" - 6"	<p><b>Carbon Steel &amp; LTCS</b> ASTM A 105 ASTM A 694 F42-46-52-56-60-65-70, ASM A350 LF2</p> <p><b>Alloy Steel</b> ASTM A 182 F1/ F12/ F11/ F22/ F5/ F9/ F91</p> <p><b>Stainless Steel</b> ASTM A 182 F304/L/H, ASTM A 182 F321/H, ASTM A 182 F347/H, ASTM A 182 F316/L/H, Duplex, Super duplex &amp; 6Mo</p> <p><b>Titanium, Alloys and Copper Alloys</b> Nickel 200/201, Alloy 400-600-601-615-800H-800HT-825-B2/3-C22-59-C276 Cu-Ni 90/10 &amp; 70/30, Titanium Gr. 2</p>	<p>ASME B 16.1 1 – ASME B 1.20.1 – MSS-SP95 MSS SP97 - BS 3799 - DIN</p>

## FLANGES

TYPE	DIMENSION	MATERIALS	STANDARD
<ul style="list-style-type: none"> <li>Welding Neck</li> <li>Slip-on</li> <li>Socket Weld</li> <li>Lap Joint</li> <li>Threaded</li> <li>Blind</li> <li>Long Welding Neck</li> <li>Flat</li> <li>Spectacle Blinds</li> </ul>	1/2" - 72"	<p><b>Carbon Steel &amp; LTCS</b> ASTM A 105, ASTM A 694 F42-46-52-56-60-65-70, ASTM A350 LF2</p> <p><b>Alloy Steel</b> ASTM A 182 F1/ F12/ F11/ F22/ F5/ F9/ F91</p> <p><b>Stainless Steel</b> ASTM A 182, F304/L/H, ASTM A 182 F321/H, ASTM A 182 F347/H, ASTM A 182 F316/L/H, Duplex, Super duplex &amp; 6Mo</p> <p><b>Titanium, Alloys and Copper Alloys</b> Nickel 200/201, Alloy 400-600-601-615-800H-800HT-825-B2/3-C22-59-C276 Cu-Ni 90/10 &amp; 70/30, Titanium Gr. 2</p>	<p>ASME B16.5 - ASME B16.47 A/B - MSS SP 44 - TEMA BS 3293 - API 605 - AWWA C207-55 - API 6B/6BX</p>

TYPE	DIMENSION	MATERIALS	STANDARD
Stud Bolts	M10 to M100 & 3/8" to 6"	Carbon Steel, Mild Steel, Alloy Steel & Stainless Steel.	ASTM / ASME / BS / DIN / JIS / BS EN ISO
Anchor Bolt Grade	M6 to M100 in metric series, 1/4" to 6" in imperial.	Carbon Steel, Mild Steel, Alloy Steel & Stainless Steel.	ASTM / ASME / BS / DIN / JIS / BS EN ISO
U-Bolt	Pipe Size: 1/4" to 48" Threaded Size: 1/4" (M06) to 2"(M52)"	Carbon Steel, Mild Steel, Alloy Steel & Stainless Steel.	Metric & Imperial Size ASTM / ASME / BS / DIN / JIS / BS EN ISO
Hex & Heavy Hex Bolts	M06 TO M64 & 1/4" TO 2"	Carbon Steel, Mild Steel, Alloy Steel & Stainless Steel.	ASTM / ASME / BS / DIN / JIS / BS EN ISO <b>Threads:</b> UNC, 8UN, UNF, Metric Course and Metric Fine
Nuts	M03 TO M100 and 1/8" TO 8"	Carbon Steel, Mild Steel, Alloy Steel & Stainless Steel.	ASTM / ASME / BS / DIN / JIS / BS EN ISO
Washer	M03 TO M110 AND 1/8" TO 3"	Carbon Steel, Mild Steel, Alloy Steel & Stainless Steel.	ASTM / ASME / BS / DIN / JIS / BS EN ISO
Screws	M03 TO M100 & 1/8" TO 3"	Carbon Steel, Mild Steel, Alloy Steel & Stainless Steel.	DIN / BS EN ISO/ Countersunk/Flat Screws, ALLENKEYS SCREWS, Pan Head Phillips Screws, TAPPING SCREWS, MACHINE SCREWS, CHEES HEAD SCREW, SELF DRILLING SCREW, DRY WALL, SCREW, LAG SCREW, WOOD SCREW, ROOFING SCREW, SET SCREW

**Coatings:** Zinc Plated/Hot Dip Galvanized/Stainless steel/Black/ PTFE/Yellow/Brass/ Dracomet etc

## GASKETS

## STANDARD GASKETS

TYPE	DIMENSION	MATERIALS	STANDARD
<ul style="list-style-type: none"> <li>Spiral Wound</li> <li>Ring Joint BX – RX (oval – octagonal)</li> <li>Lens</li> <li>Compression</li> <li>Packing</li> <li>Double Jacketed</li> </ul>	1/2" to 48" (special sizes upon client requests)	Carbon Steel, Mild Steel, Alloy Steel & Stainless Steel. <b>Stud Bolt Grade:</b> B7/B7M/B16/L7/L7M/L43/SS304/SS304L/SS316/ SS316L/B8 CI-1/B8 CI-2/ B8M CI-1/ B8M CI-2/ Super duplex A307A/A307B/A36/ MONEL 400/ INCOLOY 925/ 20CrMoVTiB4-10	ANSI B 16.20 ANSI B 16.5 ANSI B 16.47 MSS-SP44

## INSULATING JOINTS

TYPE	DIMENSION	MATERIALS	STANDARD
<ul style="list-style-type: none"> <li>Monoblock Type</li> <li>Insulating Kits</li> </ul>	1/2" to 24"	<ul style="list-style-type: none"> <li>Carbon Steel</li> <li>Low Temperature Carbon Steel</li> <li>Low Alloy Carbon Steel</li> <li>Stainless Steel and Alloys</li> </ul>	ANSI CLASS 150 - 2500



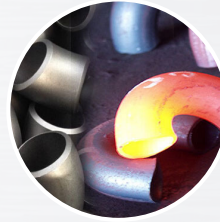
## Engineered Solutions for your control and automation needs

We provide our customers with engineered solutions for control and automation requirements within the oil & gas and other affiliated industries. Our team works with some of the *most advanced equipment suppliers from world* with the aim to maximize the local content of any new system acquisition through our offerings such as fabrication and integration activities. Once operational, these applications require a comprehensive package of support which we provide through our engineering and technical services team. Our support includes **diagnostic services** delivered by our trained technicians, **engineering support** and the **provision of spare parts and repair services**.



### Field & Panel Instruments

- Pressure Gauges
- Pressure Switches
- Differential Pressure
- Switches
- Level Switches
- Temperature Switches
- Flow Switches
- Pr. & Temp. Transmitters
- Thermowell
- Submersible Pressure transmitters
- Vane Flow Switches,
- Level Transmitters
- Dry Run Switches
- Ultrasonic Switches



### Instrumentation Tubes & Fittings

- Instrumentation Tubes
- Instrumentation Fittings



### Instrumentation Valves & Manifolds



### Tank Gauging System

- Radar Gauging Products & Solutions



### Field Bus Solutions & Intrinsically Safe Products

- Intrinsic Safety & Process I/O
- HART Interfacing
- Process Alarm Equipment
- Industrial Security
- Surge Protection
- HMI and Visualization
- Industrial Wireless
- Field Bus
- Industrial Ethernet



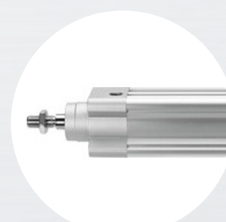
### Process Analyzers

- Analyzers



### Safety Interlocks

- Valve Locking Devices
- Log Out / Tag Out



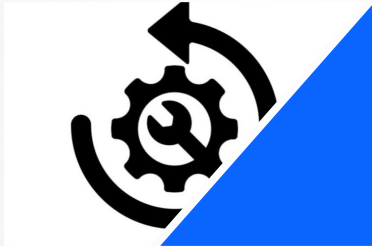
### Actuators

- Pneumatic
- Hydraulic
- Electric
- Gas Over Oil
- Manual

## We provide a wide range of services 24 x 7 | 365 days

*Industries: Oil & Gas | Power & Process Industries | Water & Waste Water Management*

Our scope of maintenance and field service covers a wide range of **mechanical**, **controls** and **safety valves** and **actuators**. We cover our associated brand as well as other make/brands also for valves supplied worldwide. Through our existing European and Middle Eastern networks, we are able to provide solutions, services and spare parts in a timely manner.



### Optimization, Repairs & Reverse Engineering

- Damage Examinations
- Nondestructive Checks
- Reverse Engineering
- Reconstruction and Optimization
- Functional Tests
- Guarantees



### Engineering

- Custom made products that are either obsolete or discontinued
- valve components dimensional calculations and proper material selection for the application.
- Flow computation calculations using state of the art solid works and 3d software.



### Mobile On-Site Solutions

- Mobile Workshop
- Turning
- Welding
- Lapping



### Valve Reconditioning

- On site valve dis-assembly
- Transportation to and from workshop
- Revision on-site
- Pressure tests
- Reassembly
- Documentation





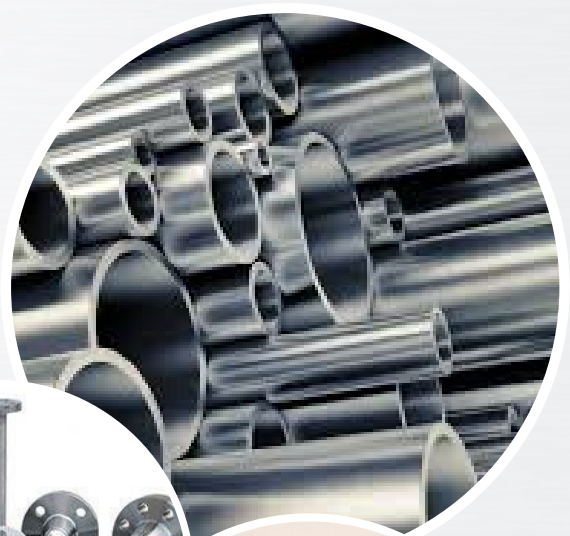
# CONTACT US

Mazaya Business Avenue BB1, JLT,  
Dubai, United Arab Emirates

T: +971 (04) 453 4693

M: +971 56 311 6977

E: [info@hppt-me.com](mailto:info@hppt-me.com)



Your global sourcing specialists